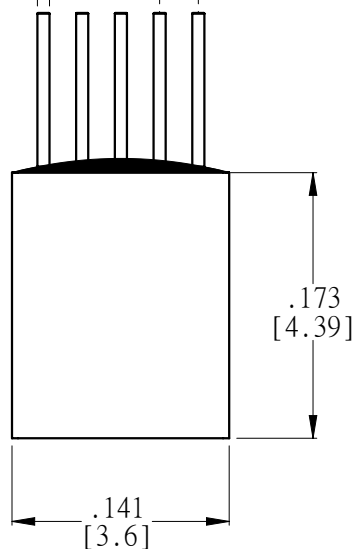


.008 X .0025 (TYP)
[0.20] [0.06]
SOLDER COATED

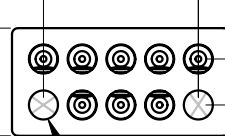
.025
[0.64]
PITCH



(4) SPACES @
.025 = .1
[.064] [2.54]

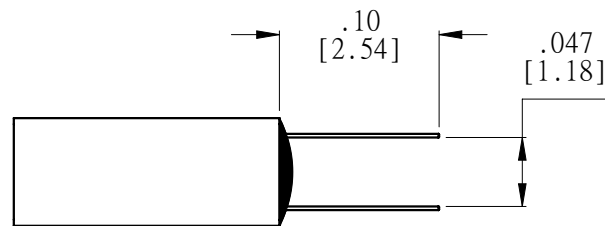
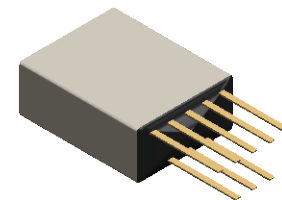
.030
[0.51]

.070
[1.78]




.030
[0.76]

2X GUIDE POST HOLE



NOTE:

DIMENSIONS IN [] ARE IN
MILLIMETERS UNLESS
OTHERWISE NOTED AND ARE
FOR REFERENCE ONLY

TOLERANCES UNLESS OTHERWISE NOTE		SENONLINK TECHNOLOGY	Title: (8) PIN MALE NANO W/GUIDE POST HOLES DUAL ROW CONNECTOR		
DIMENSIONS IN	Inches		DWG NO. A70009		
2 PL D E C± .01			Size: A4		Third Angle 
3 PL D E C± .005			Scale: 8:1 Sheet 1 OF 1		
4 PL D E C± .0005			REV 0		
ANGLES± 1°		Issued: PETER	DATE 04-08-20		